



Ellingham CE Primary School Friday Flyer

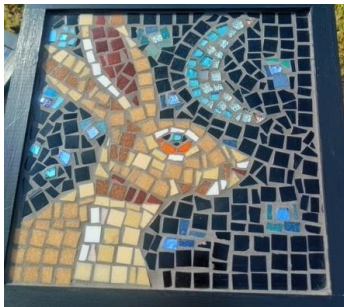
05.06.26

Head of School Update

This week, our pupils have returned to school with great enthusiasm for all the fun activities we have planned. We are working with a local mosaic artist to create these fabulous mosaics as part of the What a Wonderful World Festival in Alnwick. Our art work will be displayed in the Playhouse during the festival if you have time to pop in and have a look.

Keystage 2 had a great day out at the Countryside Day in Wooler, and Wellies&Wonder welcomed the community in for their open day. We are always proud of our pupils' excellent behaviour when we have visitors, or are out and about, and this week has been no exception.

The rest of the term is looking really busy, so keep an eye out for the dates and arrangements coming up.





Attendance

Class	Weekly attendance	Annual attendance
Splash	100	94
Space Base	98.8	94.7
Earth Works	95	90
Time Zone	100	92.8

Did you know? Each pupil has 175 non-school days a year to spend however they like. The table below shows the significant impact of absence over time.

Days of school add up to lost learning						
Days in school	190	186	180	175	171	170
Percentage attendance	100%	98%	95%	92%	90%	<90%
	Excellent	Excellent	Good	Caution	Cause for concern	Serious concern

Absence Procedures If your child is ill, please keep them at home until they are well enough to return to school. Please notify us by phone call or email before 9.15am if your child is to be absent, and continue to inform us on a daily basis if they continue to be ill.

We have a continual focus on attendance and punctuality and this is of the utmost importance in your child's education. Please remember that our school gate closes at 8.55am as this is when our lessons begin. Anyone arriving after this time is classed as late and will miss valuable learning opportunities which take place immediately after registration, such as phonics.

What are the risks of missing a day of school?

'Being in school is important to your child's achievement, wellbeing and wider development. Pupils with the highest attendance throughout their time in school gain the best GCSE results. The higher a pupil's attendance, the more they are likely to learn, and the better they are likely to perform in exams and formal assessments.' The Education Hub - Department for Education



Splash Class

This week, Splash have been learning about the Creation story in RE. We have been thinking about caring for the world and for the creatures that live on our planet. We had a cosy corner where we could look after some cuddly creatures and give them a brush and a wash. We have planted lots of wildflowers for the insects to enjoy and we are making log piles and stone piles as creature habitats in our outdoor space. Our polycrub is looking super smart and we have been enjoying playing in it and listening to the rain on the roof.



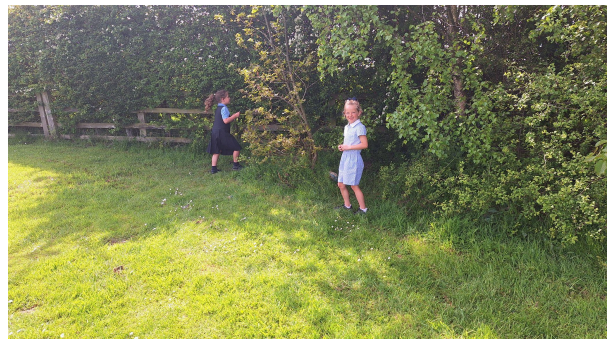
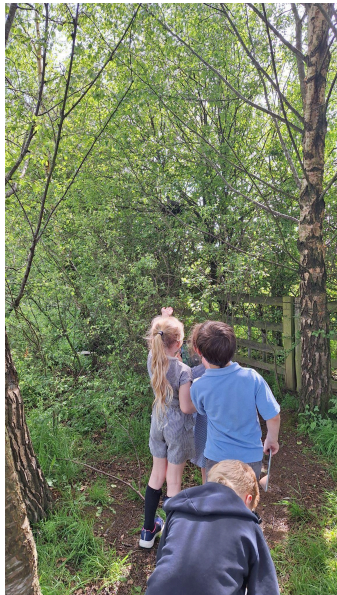


Space Base class

This week, Space Base have enjoyed a fantastic first week back. The children have settled back into their routines well and have been working hard with Splash throughout the week.

As part of their learning, the children ventured outside and became nature presenters, pretending to be David Attenborough. Using iPads, they recorded their own videos about nature and the environment. The finished videos were fantastic, and the children thoroughly enjoyed sharing their knowledge and creativity.

In maths, Space Base have been learning about fractions, with a particular focus on sharing items equally. This has helped them to understand that not all numbers can be halved and shared equally into whole numbers, developing their understanding of equal groups and fractions.





Key Stage Two: Time Zone and Earth Works

In PSHE we made compassion fortune tellers so we could reflect on our school value of compassion and to help us put what we had learned into practice.



We had an amazing trip to Children's Countryside Day at Glendale Showfield. There was a huge range of things to see and do - everything from hand hygiene and CPR to combine harvesters and donkeys. The trip was an opportunity to see many of the important jobs in our community and to learn about a wide range of rural businesses. Many thanks to Glendale Agricultural Society and to all the exhibitors.





Ellingham CE Primary School

Friday Flyer

Dates for your Diary

Wednesday 10th June	Time Zone visit to Life Science Centre Newcastle with Embleton
Friday 12th June	Earth Works to Edinburgh with Embleton
Friday 12th June	Space Base to Lilidorei for the morning
Friday 26th June - this is a different date	KS2 Summer Fair and tree planting in memory of Guy Brown
Wednesday 24th June this has been cancelled	Open the Book Y6 transition at DCHS - school organising transport
Thursday 25th June	Nursery & Reception to Embleton Beach School
Wednesday 1st July	Y6 DCHS transition day - parents organising transport
Friday 5th July	Y5 Camping
Tuesday 7th July	Sports Day 1.00pm

After School Clubs

Karate continues on a Monday **(This club will now continue until the summer holidays)**

Multi Sports with Callum on a Tuesday.

Art club continues on a Wednesday

Forest School continues on a Thursday

Fun Club on a Friday (if required - currently no takers)



Ellingham CE Primary School **Friday Flyer**



Stars of the week

Names:

Splash: Florence for joining in well and listening carefully.

Space Base: Otto – For amazing writing, including the use of capital letters, full stops and adjectives.

Earth Works: Harry for being very calm and grown up when faced with a difficult experience.

Time Zone: Serena for outstanding achievement in maths.

Oakley in Y5 has decided to walk to school to raise money for Great North Children's Hospital. This is an extraordinary challenge - he lives 16 miles away.

His epic walk will take him from home to school over 3 days, covering approximately 5.5 miles each day.

This is a charity close to our hearts and if you would like to sponsor Oakley please use this link

<https://www.justgiving.com/page/oakleywalkstoschool>